

POWERTRACK INTERNATIONAL

"HOSE PRODUCTS FOR INDUSTRY"



*Hose Products and
Accessories For:*

Rental Yards

Contractors

Construction Companies



email: sales@powertrackhose.com
web: www.powertrackhose.com
1-800-365-1577

Hose

Assembly

Catalog

*Jackhammer Hose
Assemblies*

*Air Tool Hose
Assemblies*

Red Air Hose

*Contractor's Water
Hose*

*Yellow Wire Air
Hose*

*Contractor's Fire
Hose*

*PVC Suction
Standard Duty Hose*

Layflat Hose

Sandblast Hose

Cam & Groove

Couplings

*Pressure Washer
Hose Assemblies*

Table of Contents

Jackhammer Hose Assemblies.	1
Air Tool Hose Assemblies.	1
Bulk Red Air Hose.	2
Contractor's Water Hose.	3
Yellow Wire Air Hose.	4
Contractor's Fire Hose.	5
Single Jacket Contractor's Fire Hose.	5
Double Jacket Contractor's Fire Hose.	5
PVC Suction Standard Duty Hose.	6
Layflat Blue Jacket Hose.	7
Layflat Red Jacket Hose.	8
PT45 Rubber Cover Hose.	9
Sandblast Hose.	10
Cam and Groove.	11, 12, 13, 14
Cam and Groove Line Drawings.	11
Cam and Groove Type A, Type B and Type C.	12
Cam and Groove Type D, Type E and Type F.	13
Cam and Groove Type DC, Type DP and Gaskets.	14
Universal Hose Couplings.	15
Fire Hose Couplings	16
Garden Hose Couplings	17
Shank Hose Couplings	18
Combination Hose Nipple and Steel Hose Mender.	18
Complete Coupling and Male Shank.	19
Female Shank and Shank Gaskets.	19
Sandblast Hose Couplings.	20
Pressure Washer Hose Assemblies.	21

JACKHAMMER HOSE ASSEMBLIES

Various colors and lengths available



Jackhammer Hose Specifications:

I.D. Inches	O.D. Inches	Working Pressure (psi)	Lbs. Per Foot
3/4"	1.141"	300	.44

Powertrack International's *Jackhammer Hose Assemblies* are available in coupled lengths, double banded, wrapped, with universal air couplings in 50 foot sections. Other lengths and crimped-on fittings are also available upon request. Construction consists of a smooth, seamless EPDM/NR black rubber tube and braided polyester reinforcements. The abrasion and ozone resistant cover is smooth, seamless EPDM/SBR. Standard color is red, but also available in yellow, blue, green or grey. Temperature range is -28°F to 176°F.

AIR TOOL HOSE ASSEMBLIES

Braided polyester reinforcements



Air Hose Specifications:

I.D. Inches	O.D. Inches	Working Pressure (psi)	Lbs. Per Foot
3/8"	0.649"	300	.16

Powertrack International's *Air Tool Hose Assemblies* are available in coupled lengths with brass 1/4" male NPT fittings crimped on each end. Available in 25, 50, 75 and 100 foot sections. Other lengths and fittings are available upon request. Tube construction is of smooth, seamless EPDM/NR black rubber and reinforcements are braided polyester. The cover is abrasion and ozone resistant and constructed of smooth, seamless EPDM/SBR. Standard color is red, but also available in yellow, blue, green or grey with a 3,000 foot minimum order. Temperature range is -28°F to 176°F.

BULK RED AIR HOSE

Abrasion and ozone resistant



Powertrack International's *Bulk Red Air Hose* is a heavy duty hose specifically designed for air drills and pneumatic services in mines, quarries and general construction. The smooth, seamless EPDM/SBR cover makes the Red Air Hose abrasion and ozone resistant. The Air Hose is also available in yellow, blue, green or grey with a 3,000 foot minimum order per size.

Bulk Red Air Hose Specifications:

Part Number	Nominal Hose I.D. in.	Nominal Hose O.D. in.	Working Pressure (psi)	Approx. Weight Lbs./ft.
PT14-RD300-04	1/4"	0.52	300	0.12
PT14-RD300-05	5/16"	0.59	300	0.14
PT14-RD300-06	3/8"	0.67	300	0.18
PT14-RD300-08	1/2"	0.82	300	0.24
PT14-RD300-10	5/8"	0.93	300	0.27
PT14-RD300-12	3/4"	1.14	300	0.43
PT14-RD300-16	1"	1.42	300	0.60
PT14-RD300-20	1-1/4"	1.88	300	1.09
PT14-RD300-24	1-1/2"	2.13	300	1.26
PT14-RD300-32	2"	2.60	300	1.35

CONTRACTOR'S WATER HOSE

Smooth, seamless tube construction



Powertrack International's *Contractor's Water Hose Assemblies* are available with brass ferrules and heavy duty Garden Hose (GHT) fittings in coupled lengths of 50 foot sections. Other lengths and fittings are available upon request. Tube construction is of smooth, seamless black synthetic blended rubber. Reinforcements are high strength polyester yarn. The cover's construction is of smooth, seamless black/red synthetic blended rubber. Temperature range is -40°F to 176°F.

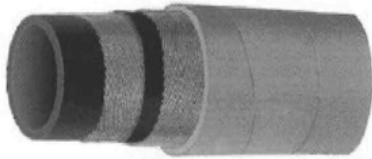
*Custom lengths available upon request.

Specifications for PT13-BKCWH Contractor's Water Hose:

I.D. Inches	O.D. Inches	Working Pressure (psi)	Burst Pressure (psi)
5/8"	0.944"	150	525
3/4"	1.080"	150	450

YELLOW WIRE AIR HOSE

Heat and Oil Resistant



Powertrack International's heavy duty steel reinforced *Yellow Wire Air Hose* is designed for rough applications in mining, quarries and construction industries where extra strength is needed to safely handle high pressure and high volume air requirements. Construction consists of a black smooth synthetic rubber tube which is heat and oil mist resistant. Reinforcements are high tensile steel wire and the cover is smooth yellow, long lasting weather and abrasion resistant synthetic rubber.

Specifications for PT16-YLWB Yellow Wire Air Hose:

I.D. Inches	O.D. Inches	Working Pressure (psi)	Burst Pressure (psi)	Plies of Reinforcement	Lbs. Per Foot
3/4"	1.22	800	2400	2	.47
1"	1.45	800	2400	2	.64
1-1/4"	1.77	700	2100	2	.85
1-1/2"	2.04	600	1800	2	1.08
2"	2.59	600	1800	2	1.65
2-1/2"	3.14	600	1800	2	2.15
3"	3.77	600	1800	2	2.75
4"	4.80	600	1800	4	6.29

CONTRACTOR'S FIRE HOSE

Single Jacket Fire Hose

Single Jacket Contractor's Fire Hose

Powertrack International's *Single Jacket Contractor's Fire Hose* is a heavy duty, rubber lined, single jacket fire hose used primarily for water movement and open end discharge in low to medium pressure applications. The Single Jacket Contractor's Fire Hose is constructed using abrasion resistant staple yarns making it the perfect choice for industrial plants and construction sites.



Single Jacket Contractor's Fire Hose Specifications:

Part Number	Hose Size in.	Bowl Size in.	Test Pressure (psi)	Service Pressure (psi)
PT21-SJCD-16	1"	1-1/4"	250	125
PT21-SJCD-24	1-1/2"	1-3/4"	250	125
PT21-SJCD-32	2"	2-1/4"	250	125
PT21-SJCD-40	2-1/2"	2-13/16"	250	125
PT21-SJCD-48	3"	3-3/8"	250	125
PT21-SJCD-64	4"	4-3/8"	250	125

Double Jacket Contractor's Fire Hose

Powertrack International's *Double Jacket Contractor's Fire Hose* is an extra heavy duty, rubber lined, double jacket fire hose. The two jackets allow for far greater abrasion resistance and higher working pressures.



Double Jacket Contractor's Fire Hose Specifications:

Part Number	Hose Size in.	Bowl Size in.	Test Pressure (psi)	Service Pressure (psi)
PT22-DJCD-24	1-1/2"	1-15/16"	400	200
PT22-DJCD-32	2"	2-1/2"	400	200
PT22-DJCD-40	2-1/2"	3"	400	200
PT22-DJCD-48	3"	3-9/16"	400	200
PT22-DJCD-64	4"	---	400	200

PVC SUCTION STANDARD DUTY HOSE

Green PVC Hose



Powertrack International's *Green PVC Suction Standard Duty Hose* is designed for routine suction applications such as conveying water and light chemical solutions. The flexible PVC, spiral helix and smooth surface provide excellent resistance against abrasion, water absorption and freezing temperatures.

Bulk Green PVC Suction Hose Specifications:

Part Number	Nominal Hose I.D. in.	Nominal Hose O.D. in.	Working Pressure (psi)	Burst Pressure (psi)	Recom. Min. Bend Radius at 68°F	Approx. Weight Lbs./ft.
PT621-GRPVC-12	3/4"	1.01	100	300	2	0.21
PT621-GRPVC-16	1"	1.27	90	270	3	0.28
PT621-GRPVC-20	1-1/4"	1.53	90	270	4	0.35
PT621-GRPVC-24	1-1/2"	1.82	90	270	5	0.48
PT621-GRPVC-32	2"	2.36	70	210	6	0.67
PT621-GRPVC-40	2-1/2"	2.90	65	195	8	0.95
PT621-GRPVC-48	3"	3.44	55	165	9	1.25
PT621-GRPVC-64	4"	4.52	50	150	13	1.94
PT621-GRPVC-80	5"	5.65	45	135	21	3.09
PT621-GRPVC-96	6"	6.80	45	135	24	4.56
PT621-GRPVC-128	8"	8.95	40	120	35	7.05
PT621-GRPVC-160	10"	11.34	40	120	41	12.37
PT621-GRPVC-192	12"	13.39	35	105	53	15.66

LAYFLAT BLUE JACKET HOSE

PVC Blue Water Discharge Hose



Powertrack International's *Layflat Blue Jacket Hose* is a lower pressure discharge hose primarily used for dewatering, mines, construction, general cleanup, marine and irrigation applications. The Layflat Blue Jacket Hose is constructed with a specially compounded high quality PVC and synthetic high tensile yarn, providing a greater resistance to abrasion, water absorption and freezing temperatures.

Bulk Layflat Blue Jacket Hose Specifications:

Part Number	Nominal Size in.	I.D. in.	Approx. Wall in.	Max. Work Pressure at 70°F (psi)	Design Burst Pressure (psi)	Approx. Weight 300ft./lbs.
PT18-BLPVC-12	3/4"	0.79	0.048	140	425	23
PT18-BLPVC-16	1"	1.04	0.052	110	340	31
PT18-BLPVC-20	1-1/4"	1.30	0.056	80	255	42
PT18-BLPVC-24	1-1/2"	1.61	0.059	80	240	56
PT18-BLPVC-32	2"	2.09	0.059	80	240	73
PT18-BLPVC-40	2-1/2"	2.56	0.059	65	200	90
PT18-BLPVC-48	3"	3.07	0.063	80	240	108
PT18-BLPVC-64	4"	4.13	0.067	70	210	158
PT18-BLPVC-80	5"	5.07	0.071	40	130	190
PT18-BLPVC-96	6"	6.16	0.075	60	200	259
PT18-BLPVC-128	8"	8.15	0.087	35	100	390
PT18-BLPVC-160	10"	10.20	0.111	35	100	564
PT18-BLPVC-192	12"	12.13	0.118	35	100	729
PT18-BLPVC-224	14"	14.14	0.118	30	85	810
PT18-BLPVC-256	16"	16.14	0.118	30	85	924

LAYFLAT RED JACKET HOSE

PVC Red Water Discharge Hose



Powertrack International's *Layflat Red Jacket Hose* is an excellent hose choice for medium pressure discharge, dewatering, mines, general construction and general cleanup in industrial plants and marine applications. The Layflat Red Jacket Hose is constructed with a specially compounded high quality PVC and synthetic high tensile yarn, providing a greater resistance to abrasion, water absorption and freezing temperatures.

Layflat Red Jacket Hose Specifications:

Part Number	Nominal Hose size in.	I.D. in.	Approx. Wall in.	Max. Working Pressure (psi)	Designed Burst Pressure (psi)	Approx. Weight 300 ft./lbs.
PT19-RDPVC-24	1-1/2"	1.61	0.08	150	450	80
PT19-RDPVC-32	2"	2.09	0.09	150	450	103
PT19-RDPVC-40	2-1/2"	2.56	0.09	150	450	119
PT19-RDPVC-48	3"	3.07	0.10	150	450	164
PT19-RDPVC-64	4"	4.13	0.10	150	450	254
PT19-RDPVC-96	6"	6.18	0.12	150	450	375
PT19-RDPVC-128	8"	8.19	0.13	115	350	566

PT45 RUBBER COVER HOSE

PT45 Black or Yellow



Powertrack International's *PT45 Rubber Cover Hose* is constructed of high tensile synthetic woven yarn fused in tough, highly resistant, seamless synthetic nitril rubber. Temperature range of -35°F to 200°F intermittent. Highly resistant to abrasions, cold, heat and ozone. Chemical resistance to acids, alcohols, alkalis and hydrocarbons. Available in black or Hi-Visibility yellow. Other colors also available upon request.

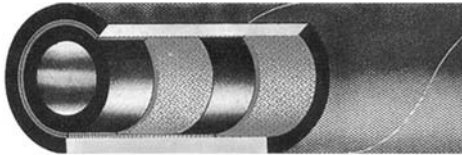
Hydrostatic Pressure Test:

Black Part #	Yellow Part #	Diameter	Service Test Pressure (psi)	Acceptance Test Pressure (psi)	Burst Pressure (psi)
PT45-BK-24	PT45-YL-24	1-1/2"	250	500	800
PT45-BK-28	PT45-YL-28	1-3/4"	250	500	800
PT45-BK-32	PT45-YL-32	2"	250	500	750
PT45-BK-40	PT45-YL-40	2-1/2"	250	500	750
PT45-BK-48	PT45-YL-48	3"	250	500	750
PT45-BK-64	PT45-YL-64	4"	250	500	750
PT45-BK-80	PT45-YL-80	5"	200	400	600
PT45-BK-96	PT45-YL-96	6"	150	300	500

PT45 Rubber Cover Hose is coupled with internally expanded fittings. Consult Powertrack International for available end styles.

SANDBLAST HOSE

Up To Four Times More Abrasion Resistant



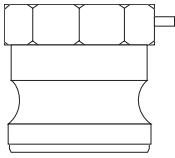
Powertrack International's *Sandblast Hose* is designed to convey abrasive sand and shot blast material. The natural black rubber tube is static conductive. With a SBR black cover and four high tensile synthetic plies the Sandblast Hose provides excellent abrasion resistance.

Sandblast Hose Specifications:

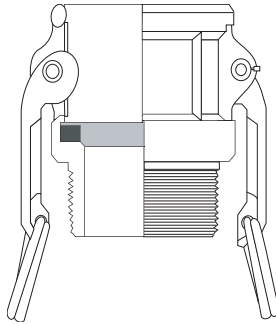
Part Number	I.D. in.	O.D. in.	Working Pressure (psi)	Burst Pressure (psi)	Approx. Weight Lbs./ft.
PT83-12	3/4"	1.50	150	630	0.61
PT83-16	1"	1.89	150	630	0.88
PT83-20	1-1/4"	2.16	150	630	1.15
PT83-24	1-1/2"	2.36	150	600	1.43
PT83-32	2"	2.89	150	600	1.73
PT83-48	3"	3.89	150	600	3.05

CAM AND GROOVE

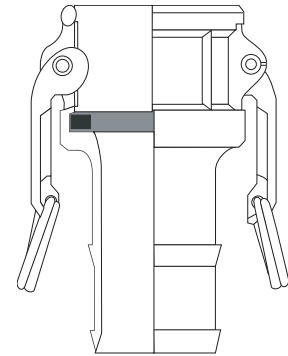
Aluminum, Malleable Iron and Stainless Steel
 Cam and Groove Line Drawings



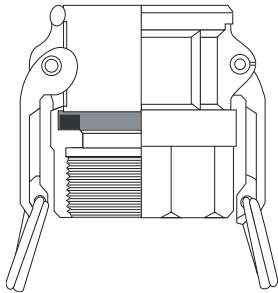
TYPE A
 Male Adapter x Female NPT



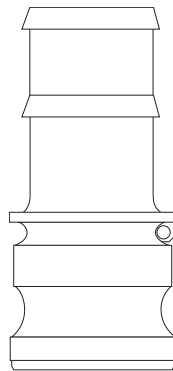
TYPE B
 Female Coupler x Male NPT



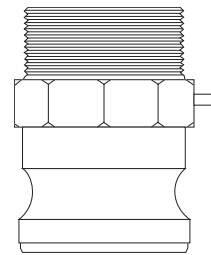
TYPE C
 Female Coupler x Hose Shank



TYPE D
 Female Coupler x Female NPT

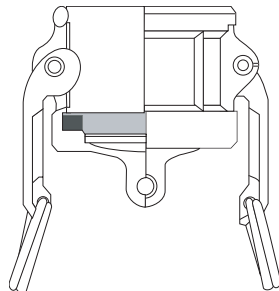


TYPE E
 Male Adapter x Hose Shank

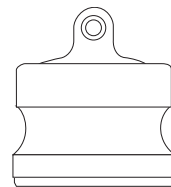


TYPE F
 Male Adapter x Male NPT

WARNING:
 UNDER NO
 CIRCUMSTANCES
 should Cam and Groove
 couplings be used for
 compressed air or steam
 service!



TYPE DC
 Dust Cap*



TYPE DP
 Dust Plug*

*Dust Caps and Dust Plugs are
NOT to be used in Pressure
 Applications for safety and
 environmental reasons.

CAM AND GROOVE

Aluminum, Malleable Iron and Stainless Steel

TYPE A
 (Male Adapter x Female NPT)



Size	Aluminum Part #	Malleable Iron Part #	Stainless Steel Part #
1/2"	PT-50-A-AL	---	PT-50-A-SS
3/4" x 1/2"	PT-7550-A-AL	---	PT-7550-A-SS
3/4"	PT-75-A-AL	---	PT-75-A-SS
1"	PT-100-A-AL	---	PT-100-A-SS
1-1/4"	PT-125-A-AL	---	PT-125-A-SS
1-1/2"	PT-150-A-AL	PT-150-A-MI	PT-150-A-SS
2"	PT-200-A-AL	PT-200-A-MI	PT-200-A-SS
2-1/2"	PT-250-A-AL	---	PT-250-A-SS
3"	PT-300-A-AL	PT-300-A-MI	PT-300-A-SS
4"	PT-400-A-AL	PT-400-A-MI	PT-400-A-SS
5"	PT-500-A-AL	PT-500-A-MI	PT-500-A-SS
6"	PT-600-A-AL	---	PT-600-A-SS
8" AND*	PT-800-A-AL	---	---
8"BL*	PT-801-A-AL	---	---

*Not Interchangeable.

TYPE B
 (Female Coupling x Male NPT)



Size	Aluminum Part #	Malleable Iron Part #	Stainless Steel Part #
1/2"	PT-50-B-AL	---	PT-50-B-SS
3/4"	PT-75-B-AL	---	PT-75-B-SS
1"	PT-100-B-AL	---	PT-100-B-SS
1-1/4"	---	---	---
1-1/2"	PT-150-B-AL	PT-150-B-MI	PT-150-B-SS
2"	PT-200-B-AL	PT-200-B-MI	PT-200-B-SS
2-1/2"	---	---	PT-250-B-SS
3"	PT-300-B-AL	PT-300-B-MI	PT-300-B-SS
4"	PT-400-B-AL	PT-400-B-MI	PT-400-B-SS
5"	PT-500-B-AL	---	---
6"	PT-600-B-AL	---	PT-600-B-SS
8"	PT-800-B-AL	---	---

TYPE C
 (Female Coupling x Hose Shank)



Size	Aluminum Part #	Malleable Iron Part #	Stainless Steel Part #
1/2"	PT-50-C-AL	---	PT-50-C-SS
3/4"	PT-75-C-AL	---	PT-75-C-SS
1"	PT-100-C-AL	---	PT-100-C-SS
1-1/4"	---	---	PT-125-C-SS
1-1/2"	PT-150-C-AL	PT-150-C-MI	PT-150-C-SS
2"	PT-200-C-AL	PT-200-C-MI	PT-200-C-SS
2-1/2"	---	---	PT-250-C-SS
3"	PT-300-C-AL	PT-300-C-MI	PT-300-C-SS
4"	PT-400-C-AL	PT-400-C-MI	PT-400-C-SS
5"	PT-500-C-AL	---	PT-500-C-SS
6"	PT-600-C-AL	---	PT-600-C-SS
8"	PT-800-C-AL	---	---

WARNING:
 UNDER NO CIRCUMSTANCES
 should Cam and Groove couplings be used
 for compressed air or steam service!

CAM AND GROOVE

Aluminum, Malleable Iron and Stainless Steel

TYPE D
 (Female Coupling x Female NPT)



Size	Aluminum Part #	Malleable Iron Part #	Stainless Steel Part #
1/2"	PT-50-D-AL	---	PT-50-D-SS
3/4"	PT-75-D-AL	---	PT-75-D-SS
1"	PT-100-D-AL	---	PT-100-D-SS
1-1/4"	---	---	PT-125-D-SS
1-1/2"	PT-150-D-AL	PT-150-D-MI	PT-150-D-SS
2"	PT-200-D-AL	PT-200-D-MI	PT-200-D-SS
2-1/2"	---	---	PT-250-D-SS
3"	PT-300-D-AL	PT-300-D-MI	PT-300-D-SS
4"	PT-400-D-AL	PT-400-D-MI	PT-400-D-SS
5"	PT-500-D-AL	PT-500-D-MI	PT-500-D-SS
6"	PT-600-D-AL	---	PT-600-D-SS
8"	PT-800-D-AL	---	---

TYPE E
 (Male Adapter x Hose Shank)



Size	Aluminum Part #	Malleable Iron Part #	Stainless Steel Part #
1/2"	PT-50-E-AL	---	PT-50-E-SS
3/4" x 1/2"	PT-7550-E-AL	---	PT-7550-E-SS
3/4"	PT-75-E-AL	---	PT-75-E-SS
1"	PT-100-E-AL	---	PT-100-E-SS
1-1/4"	PT-125-E-AL	---	PT-125-E-SS
1-1/2"	PT-150-E-AL	PT-150-E-MI	PT-150-E-SS
2"	PT-200-E-AL	PT-200-E-MI	PT-200-E-SS
2-1/2"	PT-250-E-AL	---	PT-250-E-SS
3"	PT-300-E-AL	PT-300-E-MI	PT-300-E-SS
4"	PT-400-E-AL	PT-400-E-MI	PT-400-E-SS
5"	PT-500-E-AL	---	PT-500-E-SS
6"	PT-600-E-AL	---	PT-600-E-SS
8"AND*	PT-800-E-AL	---	---
8"BL*	PT-801-E-AL	---	---

*Not interchangeable.

TYPE F
 (Male Adapter x Male NPT)



Size	Aluminum Part #	Malleable Iron Part #	Stainless Steel Part #
1/2"	PT-50-F-AL	---	PT-50-F-SS
3/4" x 1/2"	PT-7550-F-AL	---	PT-7550-F-SS
3/4"	PT-75-F-AL	---	PT-75-F-SS
1"	PT-100-F-AL	---	PT-100-F-SS
1-1/4"	PT-125-F-AL	---	PT-125-F-SS
1-1/2"	PT-150-F-AL	PT-150-F-MI	PT-150-F-SS
2"	PT-200-F-AL	PT-200-F-MI	PT-200-F-SS
2-1/2"	PT-250-F-AL	---	PT-250-F-SS
3"	PT-300-F-AL	PT-300-F-MI	PT-300-F-SS
4"	PT-400-F-AL	PT-400-F-MI	PT-400-F-SS
5"	PT-500-F-AL	---	---
6"	PT-600-F-AL	---	PT-600-F-SS
8"AND*	PT-800-F-AL	---	---
8"BL*	PT-801-F-AL	---	---

WARNING:
 UNDER NO CIRCUMSTANCES
 should Cam and Groove couplings be used
 for compressed air or steam service!

CAM AND GROOVE

Aluminum, Malleable Iron and Stainless Steel

TYPE DC
(Dust Cap)



Size	Aluminum Part #	Malleable Iron Part #	Stainless Steel Part #
1/2"	PT-50-DC-AL	---	PT-50-DC-SS
3/4"	PT-75-DC-AL	---	PT-75-DC-SS
1"	PT-100-DC-AL	---	PT-100-DC-SS
1-1/4"	---	---	---
1-1/2"	PT-150-DC-AL	---	PT-150-DC-SS
2"	PT-200-DC-AL	PT-200-DC-MI	PT-200-DC-SS
2-1/2"	---	---	PT-250-DC-SS
3"	PT-300-DC-AL	PT-300-DC-MI	PT-300-DC-SS
4"	PT-400-DC-AL	PT-400-DC-MI	PT-400-DC-SS
5"	PT-500-DC-AL	---	PT-500-DC-SS
6"	PT-600-DC-AL	---	PT-600-DC-SS
8"	PT-800-DC-AL	---	---

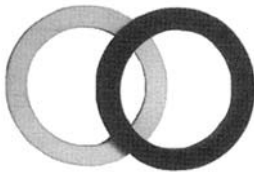
TYPE DP
(Dust Plug)



Size	Aluminum Part #	Malleable Iron Part #	Stainless Steel Part #
1/2"	PT-50-DP-AL	---	PT-50-DP-SS
3/4"	PT-75-DP-AL	---	PT-75-DP-SS
1"	PT-100-DP-AL	---	PT-100-DP-SS
1-1/4"	PT-125-DP-AL	---	PT-125-DP-SS
1-1/2"	PT-150-DP-AL	PT-150-DP-MI	PT-150-DP-SS
2"	PT-200-DP-AL	PT-200-DP-MI	PT-200-DP-SS
2-1/2"	PT-250-DP-AL	---	PT-250-DP-SS
3"	PT-300-DP-AL	PT-300-DP-MI	PT-300-DP-SS
4"	PT-400-DP-AL	PT-400-DP-MI	PT-400-DP-SS
5"	PT-500-DP-AL	---	---
6"	PT-600-DP-AL	---	PT-600-DP-SS
8"AND*	PT-800-DP-AL	---	---
8"BL*	PT-801-DP-AL	---	---

*Not interchangeable

Cam and Groove
Gaskets



Size	Buna-N
1/2"	PT-50-G-BU
3/4"	PT-75-G-BU
1"	PT-100-G-BU
1-1/4"	PT-125-G-BU
1-1/2"	PT-150-G-BU
2"	PT-200-G-BU
2-1/2"	PT-250-G-BU
3"	PT-300-G-BU
4"	PT-400-G-BU
5"	PT-500-G-BU
6"	PT-600-G-BU
8"	PT-800-G-BU

WARNING:
 UNDER NO CIRCUMSTANCES
 should Cam and Groove couplings be used
 for compressed air or steam service!

UNIVERSAL COUPLINGS

For Air and Water Service Only

Hose End



Size	Brass Part #	Malleable Iron Part #	316 Stain. Steel Part #
3/8"	PT-ABH	PT-AMH	PT-RAMH
1/2"	PT-AB1	PT-AM1	PT-RAM1
5/8"	PT-AB5	PT-AM5	---
3/4"	PT-AB6	PT-AM6	PT-RAM6
1"	PT-AB11	PT-AM11	PT-RAM11

Male NPT End



Size	Brass Part #	Malleable Iron Part #	316 Stain. Steel Part #
1/4"	PT-ABB1	PT-AMB1	---
3/8"	PT-ABB	PT-AMB	PT-RAMB
1/2"	PT-AB2	PT-AM2	PT-RAM2
3/4"	PT-AB7	PT-AM7	PT-RAM7
1"	PT-AB12	PT-AM12	PT-RAM12

Female NPT End



Size	Brass Part #	Malleable Iron Part #	316 Stain. Steel Part #
1/4"	PT-ABC1	PT-AMC1	---
3/8"	PT-ABC	PT-AMC	PT-RAMC
1/2"	PT-AB3	PT-AM3	PT-RAM3
3/4"	PT-AB8	PT-AM8	PT-RAM8
1"	PT-AB13	PT-AM13	PT-RAM13

Triple Connection



Brass Part #	Malleable Iron Part #
PT-AB10	PT-AM10

Universal Gaskets



Description	Part #
Rubber	PT-AWR4

- Same size for all couplings.
- Temperature range: -20°F to 190°F.
- Sold only in bags of 50.

Safety Cable



Cable	Part #	Hose I.D.	Length	Max. Working Pressure PSI
1/8"	PT-WB1	1/2" to 1-1/4"	20-1/4"	325
1/4"	PT-WA2	1-1/2" to 3"	38-1/4"	200

FIRE HOSE COUPLINGS

Brass and Red Polycarbonate

Brass Hydrant Reducer Pin Lug



Female Thread	Male Thread	Part #
1-1/2" NST	3/4" GHT	PT-HA1576
2-1/2" NST	3/4" GHT	PT-HA2576
2-1/2" NST	1" NPSH	PT-HA2510
2-1/2" NST	1-1/2" NST	PT-HA2515F
1-1/2" NST	1" NPT	PT-HA1510T
2-1/2" NST	1" NPT	PT-HA2510T
2-1/2" NST	1-1/2" NPT	PT-HA2515T
2-1/2" NST	2" NPT	PT-HA2520T

Brass Female to Male Hex Nipple



Female Thread	Male Thread	Part #
1-1/2" NPT	1-1/2" NST	PT-FM1515F
2" NPT	1-1/2" NST	PT-FM2015F
3" NPT	2-1/2" NST	PT-FM3025F

Brass Double Male Hex Nipple



Female Thread	Male Thread	Part #
1-1/2" NPT	1" NST	PT-DMH1510F

Thermoplastic Fog Nozzle



- Red Polycarbonate with brass stem.
- For use up to 100psi. (WATER ONLY)
- Adjusts from straight stream to fog.

Size	Thread	Part #
3/4"	GHT	PT-FNB75GHT
1"	NPS	PT-FNB100S
1-1/2"	NPS	PT-FNB150S
1"	NST	PT-FNB100NST
1-1/2"	NST	PT-FNB150NST

*120° Spray for 3/4" nozzles.

Brass Industrial Fog Nozzle



- Shut off - Straight stream- Fog.
- Delivers 30° -60° -90° fog pattern.
- Supplied with bumper.
- U/L listed and factory mutual approved for class A and B fires.
- For use up to 100psi. (WATER ONLY)

Size	Thread	Part #
3/4"	NPSH	PT-BFN75
1"	NPSH	PT-BFN100
1-1/2"	NPSH	PT-BFN150
1"	NST (NH)	PT-BFN100NST
1-1/2"	NST (NH)	PT-BFN150NST

Plain Hose Nozzle



Size	Thread	Part #
3/4"	GHT	PT-BN6
1"	NPSH	PT-BN10
1-1/2"	NPSH	PT-BN15

Adjustable Hydrant Wrench



Description	Part #
Malleable Iron	PT-AHW

5 Hole Hydrant Wrench



Description	Part #
Malleable Iron	PT-PHW

GARDEN HOSE COUPLINGS

Machined Brass with GHT Thread

Complete Coupling



Size	Part #
3/8"	PT-GHS-06
1/2"	PT-GHS-08
5/8"	PT-GHS-10
3/4"	PT-GHS-12
1" (NPSH)	PT-GHS-16

Machined Male



Size	Part #
3/8"	PT-GHM-06
1/2"	PT-GHM-08
5/8"	PT-GHM-10
3/4"	PT-GHM-12
1" (NPSH)	PT-GHM-16

Machined Female



Size	Part #
3/8"	PT-GHF-06
1/2"	PT-GHF-08
5/8"	PT-GHF-10
3/4"	PT-GHF-12
1" (NPSH)	PT-NPF-16

Long Shank
Complete Coupling



Size	Part #
1/2"	PT-GHSL-08
5/8"	PT-GHSL-10
3/4"	PT-GHSL-12
1" (NPSH)	PT-NPSL-16

Garden Hose Gaskets



Description	Part #
Red Rubber	PT-TVW7

SHANK HOSE COUPLINGS

Combination Nipples, Menders and Strainers

Combination Hose Nipple



Size	Plated Steel NPT Thread Part #
1/2"	PT-STC1
3/4"	PT-STC5
1"	PT-STC10
1-1/4"	PT-STC15
1-1/2"	PT-STC20
2"	PT-STC25
2-1/2"	PT-STC30
3"	PT-STC35
4"	PT-STC40
5"	PT-STC50
6"	PT-STC60
8"	PT-STC80
10"	PT-STC100
12"	PT-STC120

*Plated Steel in sizes 1/2"- 2" are knurled.

Steel Hose Mender



Size	Part #
1/2"	PT-DM1
3/4"	PT-DM6
1"	PT-DM11
1-1/4"	PT-DM16
1-1/2"	PT-DM21
2"	PT-DM26
2-1/2"	PT-DM31
3"	PT-DM36
4"	PT-DM46
6"	PT-DM66

Round Hole Strainer



Size	Part #
1-1/2"	PT-RHS20
2"	PT-RHS25
2-1/2"	PT-RHS30
3"	PT-RHS35
4"	PT-RHS40
5"	PT-RHS50
6"	PT-RHS60
8"	PT-RHS80
10"	PT-RHS100
12"	PT-RHS120

SHANK HOSE COUPLINGS

Aluminum with Brass Swivel Nut

Complete Coupling



Size	NPT Part #	NSP Part #
1-1/2"	PT-CAB150	PT-CAB150N
2"	PT-CAB200	---
2-1/2"	PT-CAB250	PT-CAB250N
3"	PT-CAB300	---
4"	PT-CAB400	---
6"	PT-CAB600	---

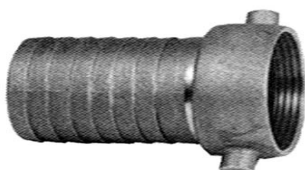
Male Shank



Size	NPT Part #	NSP Part #
1-1/2"	PT-MA150	PT-MA150N
2"	PT-MA200	---
2-1/2"	PT-MA250	PT-MA250N
3"	PT-MA300	---
4"	PT-MA400	---
6"	PT-MA600	---

*All 3" to 6" males have pin lugs

Female Shank



Size	NPT Part #	NSP Part #
1-1/2"	PT-FAB150	PT-FAB150N
2"	PT-FAB200	---
2-1/2"	PT-FAB250	PT-FAB250N
3"	PT-FAB300	---
4"	PT-FAB400	---
6"	PT-FAB600	---

Shank Gaskets



Size	NPT Part #	NSP Part #
1-1/2"	PT-KRW20	PT-KRW2075
2"	PT-KRW25	---
2-1/2"	PT-KRW30	PT-KRW3075
3"	PT-KRW35	---
4"	PT-KRW40	---
6"	PT-KRW60	---

* All Short Shank Couplings are also available in Brass including Swivel Nut, Plated Malleable Iron including Swivel Nut, or Plated Malleable Iron with Brass Swivel Nut.

SANDBLAST HOSE COUPLINGS

Aluminum, Brass and Plated Steel

Sandblast
 Natural Rubber Gaskets



Description	Part #
Natural Rubber	PT-SBG

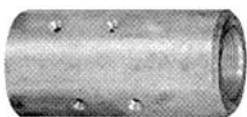
Quick Disconnects End



Size	Aluminum Part #	Brass Part #
*1/2"	PT-Q-AL050	---
3/4"	PT-Q-AL1	PT-Q-BR1
1"	PT-Q-AL2	PT-Q-BR2
1-1/4"	PT-Q-AL3	PT-Q-BR3
1-1/2"	PT-Q-AL4	PT-Q-BR4

*To be used on 1.06 OD Hose only.

External Nozzle Holder



Size	Aluminum Part #	Brass Part #
*1/2"	PT-NH-AL050	---
3/4"	PT-NH-AL1	PT-NH-BR1
1"	PT-NH-AL2	PT-NH-BR2
1-1/4"	PT-NH-AL3	PT-NH-BR3
1-1/2"	PT-NH-AL4	PT-NH-BR4

*To be used on 1.06 OD Hose only.

Quick Disconnect Couplings x
 Female NPT Quick Disconnect
 Threaded Adapters



Size	Aluminum Part #	Brass Part #
1-1/4"	PT-SB-AL1	PT-SB-BR1
1-1/2"	PT-SB-AL2	PT-SB-BR2

PRESSURE WASHER HOSE ASSEMBLIES

Cold and Hot Water



Powertrack International's *Pressure Washer Hose Assemblies* are highly resistant to abrasion, weathering and aging. Construction includes one to two high tensile tempered plated steel wire braid reinforcements and a synthetic rubber cover. Designed to be used for high pressure powered washers employing usual water, commercial detergents, degreasing and descaling agents.

Powertrack International's Pressure Washer Hose Assemblies are coupled with Male NPT by Male NPT Swivel.

Pressure Washer Hose Assemblies Specifications:

Part Description	Hose I.D. in.	Hose O.D. in.	Working Pressure (psi)	Burst Pressure (psi)	Bend Radius	Weight Lbs./ft.	Maximum Operating Pressure
1/4" 3,000psi One Wire Blue Hose	1/4"	0.53	3,000	12,000	2.9	.16	250°F
1/4" 3,262psi One Wire Hose	1/4"	0.53	3,262	13,048	3.9	.150	250°F
1/4" 5,800psi Two Wire Hose	1/4"	0.59	5,800	23,200	3.9	.186	250°F
3/8" 3,000psi One Wire Black Hose	3/8"	0.69	3,000	12,000	3.9	.24	250°F
3/8" 3,000psi One Wire Blue Hose	3/8"	0.69	3,000	12,000	3.9	.24	250°F
3/8" 3,000psi One Wire Black Hose	3/8"	0.65	3,000	12,000	7.0	.205	250°F
3/8" 4,000psi One Wire Yellow Hose	3/8"	0.66	4,000	16,000	11.8	.250	250°F
3/8" 4,500psi Two Wire Black Hose	3/8"	0.73	4,500	18,000	3.5	.315	250°F
3/8" 5,400psi Two Wire Gray Hose	3/8"	0.72	5,400	21,600	3.5	.305	250°F
3/8" 5,500psi Two Wire Arm-A-Flex	3/8"	0.72	5,500	22,000	4.5	.305	250°F
1/2" 2,300psi One Wire Black Hose	1/2"	0.90	2,300	9,200	7.0	.28	250°F
1/2" 3,000psi 1SC Yellow Hose	1/2"	0.80	3,000	12,000	4.7	.28	250°F
1/2" 3,987psi Two Wire Black Hose	1/2"	0.87	3,987	15,948	9.4	.30	250°F

Note: Not for use on Steam Service Equipment.

Powertrack International, Inc. was founded in 1974 and has been supplying industrial hose and fitting products for over 35 years. Powertrack's continued success directly correlates to our primary interest, *customer satisfaction*.

The desire to supply our customers with the highest quality products, fastest service and extremely competitive pricing is achieved through the efforts of our dedicated and knowledgeable employees.

Through our network of three strategically located distribution warehouses we are prepared to service your hose and fittings requirements globally.



**4625 Campbells Run Road
Pittsburgh, PA 15205
1-800-365-1577
Phone: (412) 787-4444
Fax: (412) 787-8520**

**13225 FM 529, Bldg. #E
Houston, TX 77041
1-800-937-2269
Phone: (713) 466-1745
Fax: (713) 466-3716**

**721 W. 15th Street
Long Beach, CA 90813
1-800-925-3414
Phone: (562) 436-9088
Fax: (562) 436-5700**

**DUE TO CONTINUAL PRODUCT IMPROVEMENTS POWERTRACK
INTERNATIONAL, INC. RESERVES THE RIGHT TO ALTER
SPECIFICATIONS WITHOUT PRIOR NOTICE.**